

## APS 006 mobile electrothermal unit 13 kw.

### Technical description

*Thermal electric system adjustable from 1 to 13 kw, suitable for production water at low and high temperature, complete with circular pump, AT-BT limit probes of temperature, control panel with electronic cards and LCD display, safety valve, pressure gauge and thermometer, stainless resistance steel corrosion resistant, loading and unloading fluid valve, expansion tank.*

*The machine is supplied fully assembled and wired: it's hidraulically and electrically tested.*

### Raccomanded application

**Hot thermal test**

**Heating of greenhouses or prefabricated enviroments**

**Temporary emergency heating**

**Heating and drying of building parts**

**Drying screeds for radiant systems**

### Main functions

**Pin code protection machine**

**Production water heating high and low temperature  
20-80° C.**

**Adjustable power settable step by step from 1 to 13 kw.**

### Product plus

**Remote control parameters**

**UNI 1264 programs**

**Self-levelling screed programs**

**USB port for unloading of funcnional reports**

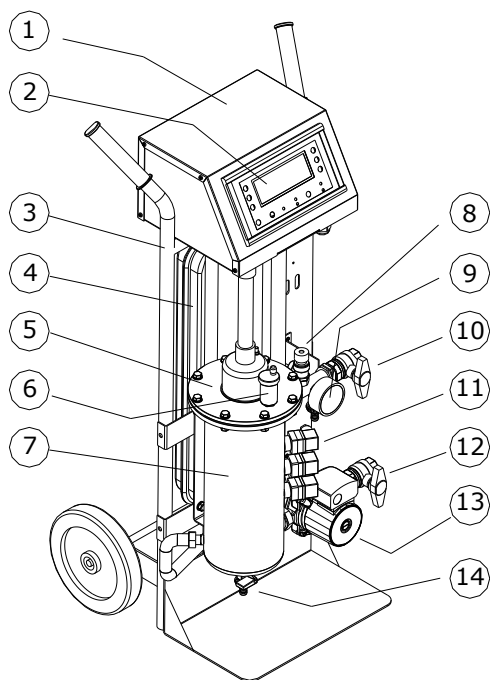


**Direzione amministrativa e commerciale**

Via Del Parco, 5  
20080 Albairate (MI) Italia  
Tel (+039) 02.94061133  
Fax (+039) 02.94061133

**Produzione e laboratorio**

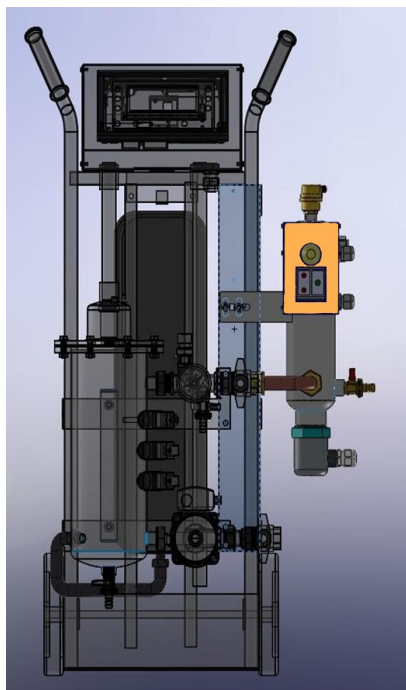
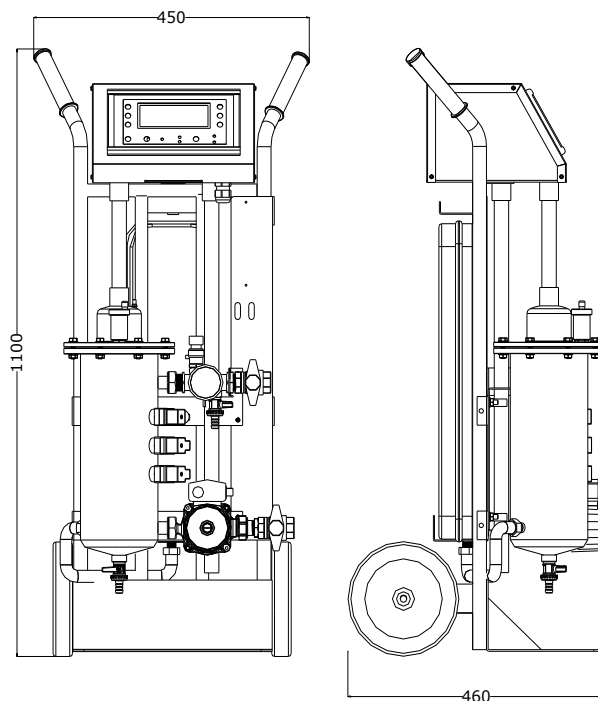
Via E. Toti, 32  
20080 Albairate (MI) Italia  
Tel (+039) 02.94921122  
Fax (+039) 02.94921122



## Description of the main components installed

- 1- dash electrical board
- 2- Control panel
- 3- Metal frame painted
- 4- Expansion tank 9 lt.
- 5- Electric resistance flange
- 6- Air valve
- 7- Leads resistance boiler body
- 8- Safety valve calib. 3 bar
- 9- Thermomanometer control
- 10- Shut-off valve supply 1"
- 11- Control and safety group probes
- 12- Shut-off valve return 1"
- 13- Circular pump to three speeds
- 14- Unloading fluid valve

## Sizes and dimensions



## Auxiliary barrel kit

Maximum capacity 3 kw auxiliary barrel, without adjustment, designed and built for the use in cases under the main machine APS 004 do not fall within the parameters of installed capacity barrel complete with galvanized steel PN 6, air valves and exhaust equipment, control panel with start switch indicator light resistance, settable thermostat from 30 to 90°, probe applied to the barrel, resistance in nickel-plated brass EC from 3 kw. With threaded diam. 1 1/2" and plastic protection.